

Casson Street, London E1 5LA

£1,800,000

Birchills Estate Agents are delighted to offer the sales market this amazing investment that is situated in the popular East London area of Spitalfields close to local shops and amenities. The open spaces of Altab Ali Park are within easy reach. Transport links are provided by Whitechapel Station (Overground and rail station) and Aldgate East (Circle, Hammersmith & City and District lines).

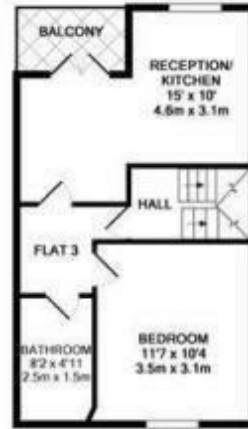
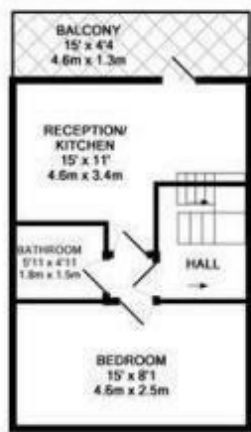
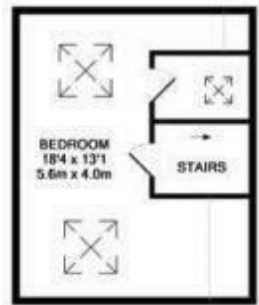
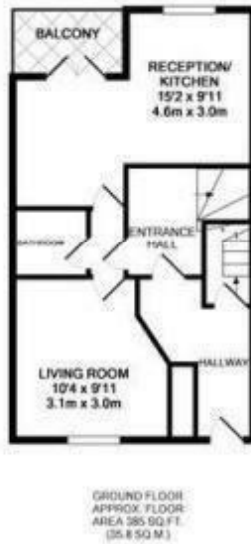
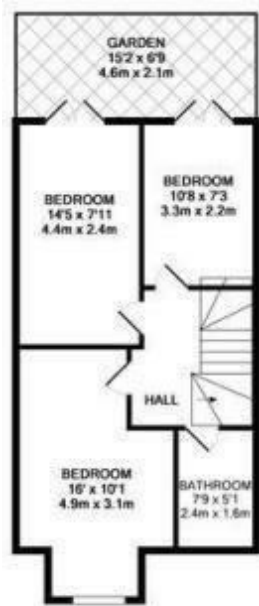
The property comprises a mid terrace building arranged over lower ground, ground and four upper floors. The property is internally arranged to provide four self-contained flats (one x two bedroom flat, one x three bedroom flat and two x one bedroom flats).

4 x flats comprised in 1 freehold of the following

- 1 x 3 bedroom flat
- 2 x 1 bedroom flat
- 1 x 2 bedroom flat

Currently achieving £9000 rental income per month

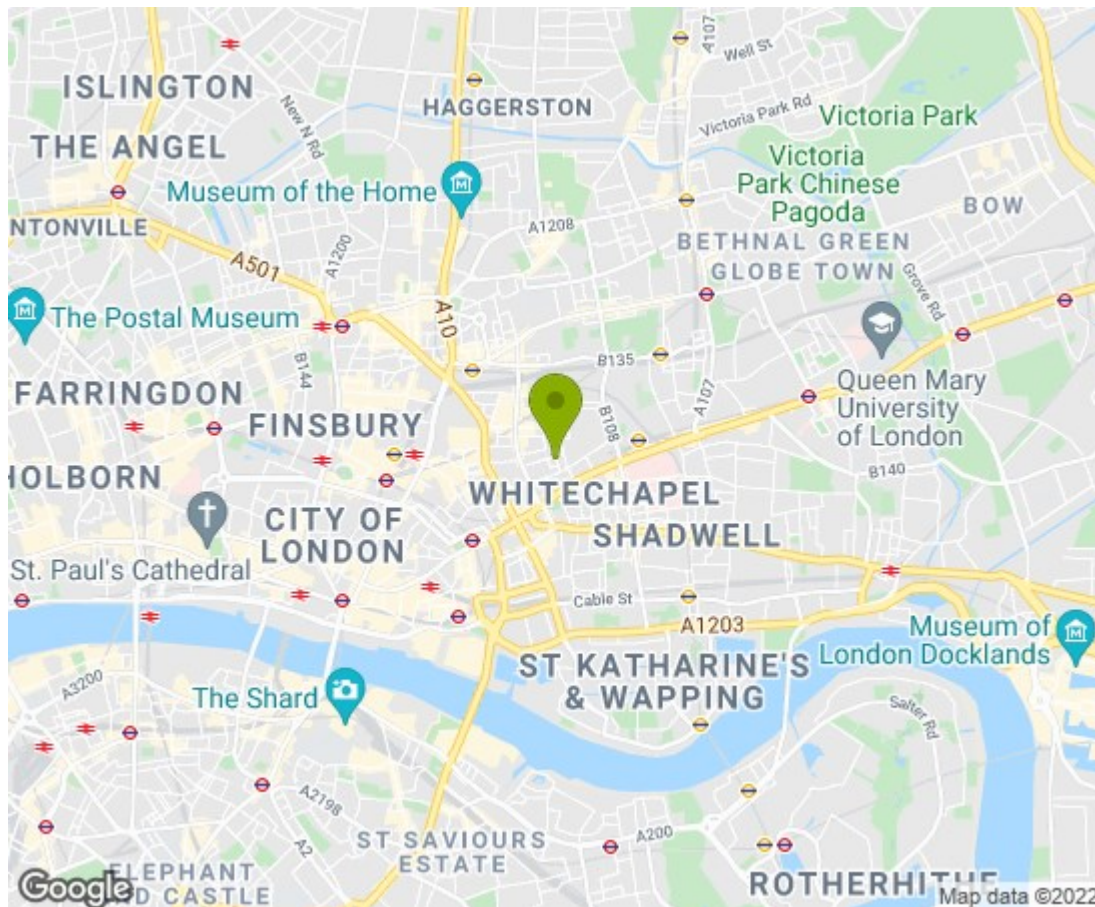
Casson Street, London E1 5LA



TOTAL APPROX. FLOOR AREA 2141 SQ. FT. (198.9 SQ. M.)

Whilst every attempt has been made to ensure the accuracy of the floor plan contained here, measurements of doors, windows, rooms and any other items are approximate and no responsibility is taken for any error, omission, or misstatement. This plan is for illustrative purposes only and should be used as such by any prospective purchaser. The services, systems and appliances shown have not been tested and no guarantee as to their operability or efficiency can be given.

Made with Mapbox GL JS



Energy Efficiency Rating		
	Current	Potential
Very energy efficient - lower running costs		
(92 plus) A		
(81-91) B		
(69-80) C		
(55-68) D		
(39-54) E		
(21-38) F		
(1-20) G		
Not energy efficient - higher running costs		
EU Directive 2002/91/EC		
England & Wales		
Environmental Impact (CO ₂) Rating		
	Current	Potential
Very environmentally friendly - lower CO ₂ emissions		
(92 plus) A		
(81-91) B		
(69-80) C		
(55-68) D		
(39-54) E		
(21-38) F		
(1-20) G		
Not environmentally friendly - higher CO ₂ emissions		
EU Directive 2002/91/EC		
England & Wales		

